



ALOG

# ALL ABOUT ALOG

The newsletter of the Art League of Germantown  
PO Box 855, Germantown, MD 20875-0855

[www.alog.org](http://www.alog.org)

February 2025



## President's Message by Kendra Biddick



Last night was the reception for the Kentlands Juried Exhibition. We had a standing room only crowd for the reception, where our juror, Jacob Muldowney, handed out awards and talked about each piece that he singled out for recognition. There was a lot to learn. There were many people involved. Bill Mapes has been working on this for months and did all the organizing and negotiation with Kentlands as well as soliciting and organizing our submissions. Carol Moore started curating and then it became a joint effort with Beth Carmella, the Kentlands/ArtsBarn gallery director. The hanging team consisted of Chris Wickman, Matt Baker, Yelena and Andrey Skripchenko, Derrick Tabor, Pat Choquette and me. ALOG members brought their families and friends, and we had a joyful evening.

Our exhibitions have been improving from year to year. We all need to be on our toes and working on our art to make our future shows even better. We'll do it, because we love what we are doing. For some of us it is a full-time vocation or avocation. For others it's what makes it possible to do our day job. For all of us, it's something we need to do for ourselves because we love doing it and it feeds our souls. It's worth asking ourselves the question "What is it about our work that we love?"

Here are a few of the things I love about my work. When I'm creating a felted piece, I love the problem-solving that is involved. How do I create what I see in my mind? How do I use the special qualities of felt and other fibers to their maximum advantage? How can I combine three-dimensional and flat spaces in the same work so it resembles high- or low- relief sculpture? There are always technical challenges because there is always shrinkage, and often color changes, sometimes questions of how different parts attach to each other to create the whole that I want. Although I enjoy not having complete control over the result, sometimes I'm not totally thrilled with the surprises.

I love the tactile aspects of wet felting. Wool from different kinds of sheep feels different and behaves differently from the beginning. It always starts with a pile of fluff, but as I work it with soap and water and various tools, it goes from squishy and fragile to leathery, like suede, to increasingly stiff. How stiff depends on the fiber. As the fibers intermingle and penetrate from bottom to top and vice versa, layered colors show through and create new colors. I love that I can just roll up my large work to transport and store.

Acrylic and ink give wonderful immediate feedback and can be changed at any point in the process. I can do detailed representational work that is more difficult with fiber. I can play with different color palettes and mix colors on the painting surface then come back later and add layers or even start over on the same surface.

Sometimes I find myself in an undefined state, where my mind is silent, and my hands seem to move without my conscious control. This is what I love best.

What is it you love about your work?

Kendra



## February Meeting Speaker

### Beverly Penn



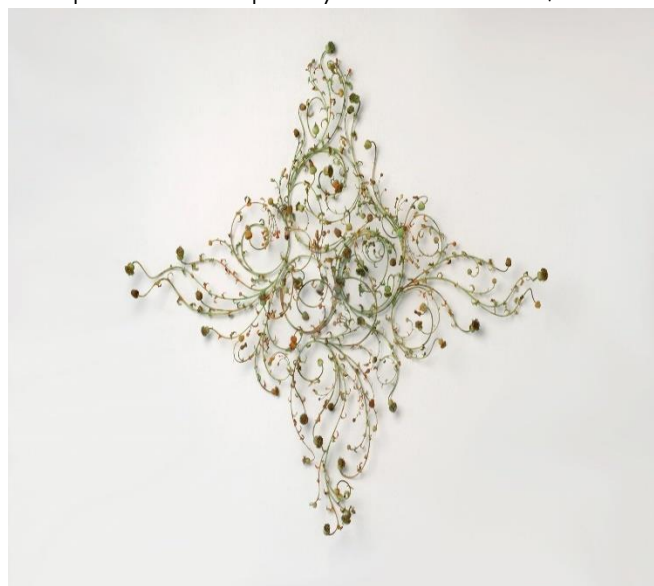
Beverly Penn is inspired by the kingdom of plants with which we share this planet—particularly native species, invasive species, and other stoic upstarts that persist without our stewardship. These symbiotic partners give us everything we need to sustain life on Earth, including the very oxygen we breathe. As complex living organisms, they are the carbon sinks that allow us to reduce global warming, control drought, and maintain our water supply. And yet science tells us that most humans, and many animals, see only a wallpaper-like background when situated in a lush plant environment. Plants, not just animals, are wildlife; but as essential as they are to human life, endangered flora are rarely protected. Plants are our barometers—when a species dies, it predicts our future.

Penn's cast bronze sculptures are constructed one small piece at a time, cell linked to cell, part to part, into hypnotic interlocking systems. The sculptures are assembled on the wall like aerial perspectives of the land, growing perpendicular to the force of gravity, in an exploration of line, shape, density and complex patterning. It embraces both the scientific mind that must categorize and shape a new body of knowledge, and the equally compelling desire to order and shape unruly plants into a desirable form.

Beverly Penn's work is included in the collections of the National Museum of Women in the Arts; Museum of Fine Arts, Boston; Cooper Hewitt, Smithsonian Design Museum; Philadelphia Museum of Art; Yale University Art Gallery; Racine Art Museum; El Paso Museum of Art; Moody Foundation; ConocoPhillips Corporation; Rosewood Corporation; Cassilhaus; Samuel Dorsky Museum of Art; and the Monarch Contemporary Art Center and Sculpture Park. She was recognized as the State of Texas 3D Artist for 2017 by the Texas Commission on the Arts. Her 2024 monograph [Beverly Penn: Foregrounding](#) is now available by the publisher French and Michigan.

Penn is the recipient of grants and fellowships from the Louis Comfort Tiffany Foundation; The Rockefeller Foundation Bellagio Center; Lux Art Institute, now Institute of Contemporary Art, San Diego; Connemara Conservancy; Smitten Forum; and Texas Commission on the Arts. She has received a Fulbright Fellowship in Barcelona, Spain, the Texas State University Presidential Seminar Research Award, and nine Texas State University Faculty Research Grants involving research in Mexico, Italy, Spain, and New York.

She has been commissioned for public art projects for Carte Hilton Hotel San Diego Downtown; McCoy College of Business, Texas State University; Whole Foods Landmark Headquarters; DHRL Administration, Texas State University; The Austonian; and the cities of Austin, El Paso, and Las Cruces. Penn is a Texas Master Naturalist and Distinguished Professor Emeritus at Texas State University. Lisa Sette Gallery in Phoenix, William Campbell Contemporary Art in Fort Worth, and Flatbed Press in Austin represent her work.



Drought – Beverly Penn



Hydra – Beverly Penn

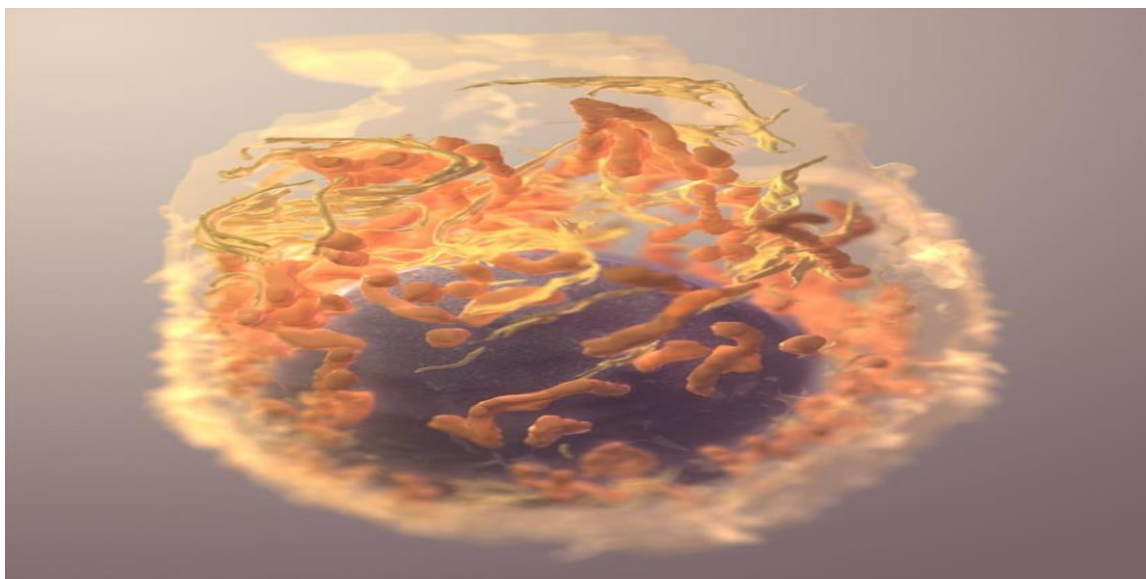
## February Artist of the Month

### *Donny Bliss*

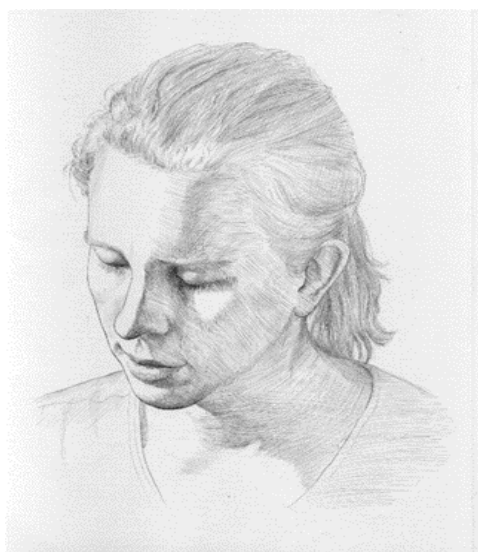


Donny Bliss received a Master of Arts in medical and biological illustration from the Johns Hopkins School of Medicine. He worked in education research at Johns Hopkins and directed computer animation and interactive products for Merck, Pfizer, and other companies in the pharmaceutical industry. At the National Institutes of Health, he has worked with multiple institutes developing cellular visualizations for the National Cancer Institute, creating VR environments for the National Institute of Nursing Research, animations for the National Library of Medicine, and currently develops presentations and blog for the NIH director.

His work has been honored with awards from the Association of Medical Illustrators, the National Science Foundation, and the NIH.



Dendritic Cell - Donny Bliss



High Resolution Electron Microscopy  
electron.nci.nih.gov

## From the Newsletter Editor

by Marylou Bono



A big thank you to all who have shared their art and articles for our Facebook page and newsletter. We have a "public" Facebook page which is for anyone to follow and view. Items of interest to the public and members are posted here. Our "private" page or "members only" is only for ALOG members and features items and notices just for the membership. Any member can make a post.

Keep in mind that the newsletter is our monthly collection of everything about ALOG. *All About ALOG* welcomes and benefits from each of your contributions—a new piece of art or one in progress or an old favorite, a found technique, an article, notice of a show you'll be in, musings, bright ideas, even a poem. Submit your work to me at [labyrinth59@gmail.com](mailto:labyrinth59@gmail.com) by the 25<sup>th</sup> of the preceding month.



Outer Limits – Marylou Bono

## Artlines

by Lynne Haussler Oakes

### Eat Your Paintings/Artwork!



I think very few have had the experience of receiving cookies with an exact replica of their art on top, with piped icing around the edges looking like a frame. This is one of my paintings so you get the idea.

But really, isn't this a great idea? You send your photos off and they come back on an edible sheet that you then cut up and place on cookies you've made. And then, when you've thoroughly enjoyed this bit of craziness, you eat your art.

When I heard about this idea, I had my wonderful friend make them for all my students as their Christmas gift this year. The reactions have been wonderful, with one student shrieking and laughing so hard I could hardly believe it!

Basically, this article is about something most of us don't know exists. It brings a completely different view of one's work, I'd say. I am still looking at the cookies with my paintings on them and now I want a bigger cookie with these images!

I resisted making a comparison to Eat Your Heart Out, but you see that I have failed. Just so you know, there is NO end to creativity, right?



## From the Drawing Board

by Bill Mapes



Cold enough!?! Winter is here and we are learning to brace ourselves against the snow and frigid temperatures once again. Please stay safe and warm.

I have found these colder days to be a blessing in disguise. No one wants or needs to be out in this weather. So here we are, homebound with time on our hands. Wait, time on our hands! What a boon to have time; time to paint. I have spent several days lately working on my work. Primarily, I have selectively searched through my partially finished canvases that needed to be completed and my finished work for those paintings which were not completed to my satisfaction.

It's tough to look at work that is completed and contemplate "attacking" it again. Usually, a fresh look at work that may be questionable will uncover a change that will make the painting better. It may be a value or color change; rediscovering an edge that needs to be amended; or a portion redraw. I have been working on at least half a dozen or more paintings and I am amazed at how a fresh eye and a bit of courage to touch finished work has improved these paintings.

All of this is the product of consistency which leads to improvement and how I look at things with a more experienced eye. The result is confirmation of years of hard work. Although some of these changes may take a short time to achieve, the result is the culmination of the whole painting leaving a more complete and satisfying work. In a sense, it is like placing the last piece in a thousand-piece puzzle. It is totally satisfying to now being able to say, it is finished...

If you paint with oils or acrylics, I suggest you look at some of your older work that may not measure up to your current expectations and make a reevaluation. You too may quickly see something that would change a 'question mark' to an 'answer' to make the painting better. It has been very rewarding for me to resurrect and elevate older work to a more finished and satisfying piece, especially when I was deeply invested in the subject.

Say "Humbug" to Jack Frost and enjoy these cold days with your work along with a hot cup of your favorite drink.

## ALOG Members Come Through Again - "A Time to Share"

by Marge Wasson

Thank you, thank you! To everyone who contributed to our annual Holiday Art Supply Drive for the Boys & Girls Club of Germantown, thank you again! This is such an important and caring connection to our community.

We should all be proud of the wonderful collection of art supplies that we amassed for those kids. Seven overflowing boxes and bags! We collected yarn, watercolor and acrylic paint and paint sets, pastels, markers, gel pens, beads and other embellishments, brushes, paper, painting panels, pipe cleaners, sharpies, and more!

And the kids loved all the goodies, according to Branch Director Toman Napitupulu.



## Member News



New ALOG member Nancy Jakubowski was invited to be a resident artist with Gallery 209 in the Artist and Makers Studios (A&M), Rockville, MD. Gallery 209 is a collective of 19 artists who show their work through changing exhibits each month. With exhibits changing monthly in its 4 public galleries, A&M Studios provides studio space for 87 creative professionals. Gallery 209 occupies one of the public galleries. Artists with studios at A&M provide a display of works fitting a monthly theme in the Gallery Hall. The Invited Artist Gallery provides a venue for select well-recognized guest artists from the DMV area. The newest Lounge Gallery provides residents with mini-solo opportunities. A&M is also a place where people can take art classes. Many of the resident artists teach in their studios and the Potomac Fiber Arts Guild offers classes and workshops.

Gallery 209 and Artists & Makers Studios have become favorite destinations for the DC area. Their award-winning artists produce interesting and dynamic shows every month. Gallery 209 has been awarded the "Best in Rockville" Art Gallery Award for multiple years, and Artists & Makers Studios is a noted "Best in Bethesda" awardee as well.

Linda Sherman invites all ALOG members to her talk on abstract expressionism at the next GFAA meeting on Thursday, February 13, 3035 either in person at Asbury or via Zoom. Contact Marylou Bono for the Zoom link. See more about the talk here <https://www.gaithersburgfineartsassn.org/copy-of-home-12>



Next Meeting is Feb. 13, 2025

### **Linda Slattery Sherman: Abstract Painting & Demo**

Come at 6:30 pm for chatting at  
Asbury Hefner at the Art Room  
Program at 7 pm in person  
and on Zoom

## Awards from "Exposition!" Our 12<sup>th</sup> Annual Juried Show at the Kentlands Mansion

### Best of Show

"Eternal Bloom" Dale Shore

### Oil Acrylic Category

First Place: "The Drummer" Gail Kaplan-Wassell

Second Place: "Dog Days in the Basin" Matt Baker

Third Place: "Inhabitants of the Coral Reef" Linda Slattery Sherman

Honorable Mention: "Accepted and Measured" Matt Baker, "Confetti" Jean Finkleman

### Wet Media Category

First Place: "A Glorious Morning" Kien Lee

Second Place: "Monarda" Margaret Polcawich

Third Place: "Tuscany" Craig Higgins

Honorable Mention: "The Red Pony" Kien Lee

### Dry/Mixed Media Category

First Place: "Follow Me" Carol Moore

Second Place: "Humble Beginnings" Carol Moore



Up in the Gallery – Marge Wasson

Third Place: "Down Through the Leaves" Margaret Polcawich  
Honorable Mention: "Growing Up Too Fast" Kien Lee

Photography Category

First Place: "Up in the Gallery" Marge Wasson  
Second Place: "The Great Blue Heron on the Rocks" Derrick Tabor  
Third Place: "Embodied in Blackwater Falls" Derrick Tabor  
Honorable Mention: "Perfect Moment" Andrey Scripchenko

*Read about our two ongoing shows in Marge Wasson's article in Patch:*  
<https://patch.com/maryland/germantown/calendar/event/20250120/a335d86a-6889-4d7a-8c78-99271dabd8c6/art-league-of-germantown-on-exhibit-2-venues-at-once>

*Below our work at the Art Barn City Shop on exhibit through March 9th*



From the Show Chair  
ALOG Inspired! '25 Art Show & Sale  
Important Dates and Events  
*by Carol Moore*

**MARK YOUR CALENDARS!** Below are the important dates for our upcoming spring exhibition **Inspired! '25**. We have a great line-up of opportunities and events planned. The show prospectus will be released in early February.

- Show Dates:** Saturday, May 3 - Sunday, June 1, 2025
- Open 10-5 Tuesday-Sunday, Closed Monday
- Opening Reception:** Sunday, May 4, 2-4:30 pm
- Closing Reception:** Sunday, June 1, 2-4:30 pm
- Registration Deadline:** March 16
- Art Drop Off:** Wednesday April 30, 5-7 pm
- Show Curating:** Thursday, May 1, 10 am
- Show Hanging:** Friday, May 2, 10 am
- Show Deinstallation:** Sunday, June 1, 5-6 pm



Katarina Oberg

## Special Art Installation coordinated by Kendra Biddick - Community Canvas Art Project

### Fine Craft Weekends

**1 - Under \$20 table just the first two weekends - affordable gifts for Mom**

**May 3 & 4**

**May 10** (closed May 11 for Mother's Day) & Family Day

**May 17 & 18**

**May 24 & 25** (Memorial Day Weekend)

**May 31 & June 1**

### Wednesday Special Events

**May 7– ALOG Special Event: ALOG Membership Meeting, Stories Behind the Art**

Wednesday, May 7, 7-9 pm. Free [meetings or](#) and open to the public.

**May 14 – ALOG Special Event: The ALOG Oil Painters Presentation**

May 14, 2025, 7-9 pm. Free and open to the public. Registration is required. Join us for this insightful event as six ALOG master oil painters share their inspiration and approach to their painting style.

**May 21 - ALOG Special Event: A Walk through the Treehouse with Michael Marschark** Wednesday, May 21, 7-9 pm. FREE and Open to the public. Registration is required. Artist Michael Marschark will offer a guided tour of his BlackRock exhibition "The Tree House" followed by a talk and open discussion about trees. **Topics will include:** Do you feel a connection to a tree, a group of trees, of a tree species? How do you see trees' relationships with life on Earth? What can we contribute to support trees and the environment?

**ALOG Special Event:** Come out and play! Have fun exercising your intuitive abstract art skills!

**The Drawing Game | Wednesday, May 28, 7-9 pm.** FREE and Open to the public. Registration is required.

**How to play:** Stations with different art mediums will be set up in the Kay Gallery. Each participant will be given a sheet of paper and will write their name on the back. Each participant will be given 5 minutes to make marks on the paper. After the five minutes are up you pass your paper to the person on your right and then move to the next station to the left. This continues until you get your original drawing back. This is a fun way to respond to marks without the pressure of creating a final piece of artwork and to experiment with different mediums. It will be exciting to see how your drawing evolved throughout the exercise! You will get to take your original sheet home with you.

### Is There More You Can Do?

*by Carol Moore*



Recently, I asked our president, Kendra Biddick, to send out a request for a replacement for me as Spring Show Chair next year. I have always found it a privilege to be show chair and honored to have the opportunity to support each of your creative journeys. I have learned so much in my role and have gotten to work alongside many generous and talented artists. I only feel gratitude. Over the past few years, however, I have seen a steady decline in membership involvement in the show beyond what is minimally required. I imagine there are many reasons for this, such as a global pandemic, a wide range of artistic opportunities in the area and just life itself.

I am just one person, and I have had to take on many of the jobs that were once managed by a show committee. I also feel that when many creative artists come together to collaborate, new ideas are born!

This past week a few people have stepped up offering their help with various spring show tasks, however, I feel that if more members commit to help with the many tasks required to run our Spring Exhibition, I will not need to step down as show chair.

**Is there more that you can do? Yes!** Attached is a list of jobs that you can volunteer to take. These jobs are beyond your show requirements. Some are bigger than others, so please consider your talents and commit to taking on an extra role(s). Even if you are not sure how to do something, you can learn! I will help you be successful!



If you are interested in helping with a specific job and want more details contact Carol Moore at [carolmooreprintmaking@gmail.com](mailto:carolmooreprintmaking@gmail.com).

### Current Show Committee Roles:

- Show Chair - **Carol Moore**
- Assistant Show Chair
- Treasurer - **Andre Skripchenko**
- Treasurer Assistant
- Website Show Curator
- Marketing Director - **Marge Wasson**
- Marketing Assistant/Team
- Social Media – **Marylou Bono**
- Sign-up Genius Coordinator
- Fine Crafts Coordinator
- Special Events Coordinator
- Gallery Show Curator/Team (Need 4) – **Carol Moore, Lori Myers, Nancy Jakubowski...1 more needed**
- Show Hanging Coordinator – **Carol Moore**
- Show Hanging Team (at least 12) – **Lori Myers, Nancy Jakubowski... 10 more volunteers needed!**
- Graphics Coordinator – **Carol Moore**
- Google Drive: Image/Inventory Coordinator – **Keith Mounts**
- Email Mailing List Coordinator
- Reception Coordinators (Need 2)
- Take-in Coordinator - **Matt Baker**
- Take-In Assistants (Need 3) – **Jean Finkleman...2 more volunteers needed!**
- Gallery Tags and Printing
- People's Choice (Need 2)
- Bio Book – **Bill Mapes**
- Scavenger Hunt
- Banner Permit/Banner Hanging (1 banner in front of BR building,  
1 banner Upcounty banner facing 118/Middlebrook Road (Need 2)

### *From the Volunteer Chair by Noëlie Angevine*



Dear ALOG Members,

Thank you to the members who have already contributed hours as volunteers for BlackRock. You make it clear that we are, indeed, partners with BlackRock. When you participate, you have the opportunity to make our organization better known as a group of dedicated artists.

Please understand that it is essential that we participate in order to maintain our agreement with BlackRock. We have a history of fulfilling this agreement.

Out of approximately 55 members, we have had about 15 volunteers. Unfortunately, there have been a number of spots in the past several months that were not filled. Please review the opportunities for ALOG members to serve as event volunteers at Blackrock Center for the Arts on Sign Up Genius and consider volunteering your time. There are opportunities to help with art installation, receptions and with help at the artistic creative reuse market.

<https://m.signupgenius.com/#!/showSignUp/10C0F45A4AE2FA4FD0-51097264-alog/24549106>

Thank You, dear friends!  
Noëlie Angevine, ALOG Volunteer Coordinator

**Art Installation** 3 hours, January 13th

- Kien Lee
- Nancy Jakubowski

**Art Installation** 3 hours, January 16th

- Mike Marschark
- Derrick Tabor

**Reception** 2 hours, January 18th

- Noah Morris
- Tachlea Roland-Morris
- Yelena Skripchenko
- Rosanne Cuttitta
- Marylou Bono
- Andrey Skripchenko

## Artist Calls & Events of Interest

Several miscellaneous calls from Culture Spot

<https://www.culturespotmc.com/classified-type/call-for-artists/>

Several miscellaneous calls from East City Art

<https://www.eastcityart.com/calls-for-entry/commemorativeart/>

### **Mini Mid-Week Happy Hour Field Trip – MAA Exhibit at Windridge Vineyard**

Join members Rosanne Cuttitta and Marylou Bono on Thursday, February 6<sup>th</sup> from 5 to 7 pm at Windridge Vineyards to view the latest MAA exhibit and sip and chat. Contact one of these members for reservations and car pools. See more about Windridge here <https://www.windridge.wine/> See more above the event here <https://www.montgomeryart.org/event-5940637>

### **National Capital Art Glass Guild, Rhapsody in Blue**

The National Capital Art Glass Guild announces the Call-for-Entry for a Members Only exhibition at the Goldman Art Gallery in Bender Jewish Community Center in Rockville, Maryland.

Members who have yet to renew for 2025 or non-members may renew or join NCAGG at [www.ncagg.org](http://www.ncagg.org) and then submit their work. This Show will not be juried. Each artist may submit up to two entries for a single entry fee of \$25.

As the space is limited and can mainly accommodate two-dimensional wall-hanging pieces, we ask that at least one of your pieces is no larger than 12x12 inches. There are a very limited number of pedestals for sculptural pieces. No free-standing items can be accommodated in the space.

*Deadline for entries 2/3/25. Notification of Jury Results 2/14/25. Show dates 4/6-27/25.*



### **MD Art Day with Frederick Arts Council Trip Thursday, February 13th**

Network with fellow arts supporters and share the importance of our arts community with state elected officials. Event takes place at St. John's College in the Francis Scott Key Auditorium in Annapolis.

**Ride the bus with FAC!** Claim your seat on the FAC bus [here](#). Bus leaves FAC Studios (7 N Market St) at 7:30 am and returns approximately 3:00 pm. Free registration

**Register for the MCA event Here:** <https://mdarts.salsalabs.org/mad25/index.html?page=register>

Early registration closes Jan 31st (\$10) Registration February 1-11th \$20

\*\*Anyone attending the event MUST register through MCA\*\* [info@frederickartscouncil.org](mailto:info@frederickartscouncil.org)



**Maryland Federation for Art**

<https://mdfedart.com/portfolio/human-expressions/>

Human Expressions  
**Deadline February 19th**



Protector of Small Moments, mixed media collage on cradled wood, Marisa Canino from Winter Member Show 2024



Bethesda Painting Awards, Carol Trawick Prize  
**Deadline February 26, 2025**

<https://www.bethesda.org/bethesda/bethesda-painting-awards>



Linda S. Sherman

Marion L. Griffin

Joan April

Gail Kaplan-Wassell

Older in years but not in heart, four women have had their art blossom in their second or third acts of their adult lives. Although each comes from a different professional background, love of abstract art and strong friendship binds them together.

At FCC's Mary Condon Hodgson Art Gallery  
***Not Beyond our Expiration Date!***

March 8 - April 9, 2025

**March 8, Opening Reception: 5-7 pm**



Linda Sherman  
301-335-3136



Marion L. Griffin  
301-788-3546



Joan April  
301-318-6797



Gail Kaplan-Wassell  
301-890-1551

**From points south:**

- Take I270 north
- I270 turns into Route 40
- Route 40 turns into Route 15 N

**THE MARY CONDON HODGSON ART GALLERY**  
 Visual & Performing Arts Center  
 Frederick Community College

Contact: Wendell Poindexter, 301.846.2513  
 7932 Opossumtown Pike, Frederick, MD 21702  
 Gallery Hours: Mon – Thurs, 9:30 – 9:00 pm  
 Friday, 9:30 – 5:00 pm & Sat, 9:30 – 3:30 pm

- Route 15 to Mottter Avenue/ Opossumtown Pike
- Continue on Opossumtown Pike
- BYPASS Main entrance of Frederick Community College (traffic light)
- Turn left at NORTH ENTRANCE of FCC at the traffic light
- BYPASS the first entrance to the parking lot
- Take the second entrance to Parking Lot 9

## CALL FOR ART



We invite artists to **submit their work** for an upcoming art exhibition addressing community impact and environmental justice. We seek art that explores the intersection of environmental challenges and social inequities, focusing on the human stories behind environmental harm and resilience. This exhibition endeavors to **amplify the voices of those affected by environmental harm and highlight the resilience, struggles, and creativity of impacted communities.**

### Eligibility:

- Open to all artists 18 and older currently residing in the DMV area.
- Acceptable mediums include paintings, sculptures, and photography.
- Artwork must be created within the last five years and align with the exhibition's theme.
- Submissions from underrepresented voices, especially those from impacted communities, are strongly encouraged.

**SUBMIT YOUR ENTRIES ON OUR WEBSITE BY MARCH 9TH, 2025**

Selected artworks will be exhibited at the Shannon and Michael Priddy Library, The Universities at Shady Grove from March – April, 2025.



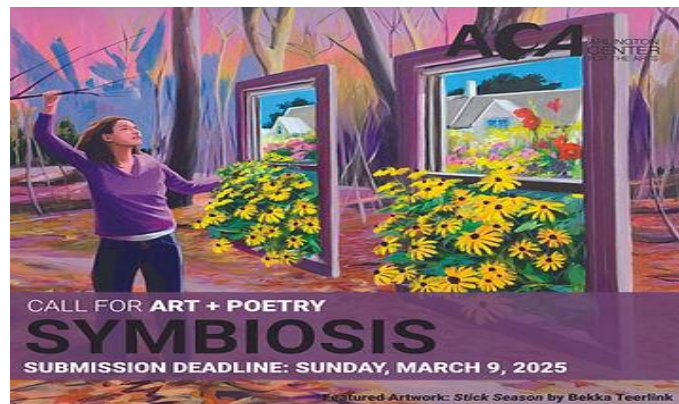
Priddy Library

BLDG III, 1st Floor  
shadylib@umd.edu | 301-738-6020

### Symbiosis In celebration of [Arlington250](#)

Arlington Center for the Arts (ACA) in partnership with Arlington's Poet Laureate, Jean Flanagan seeks submissions to *Symbiosis*. This unique call **invites visual artists and writers** from the region to sift through the past and find commonalities in the human experience.

**This exhibition will pair visual artworks with pieces of poetry, creating platforms for new meanings to be examined and explored. Deadline March 9th**  
<https://www.acarts.org/calls-for-artists>



### Laurel Art Guild 56<sup>th</sup> Annual Juried Open Exhibition

Each year the Laurel Art Guild sponsors a juried exhibition at the Montpelier Arts Center in Laurel, Maryland. Jurors are selected from the many accomplished professional artists in the DC area. Submissions open in December of each year, and it's free to enter. **Deadline March 17th**  
<https://laurelartguild.org/annual-open-juried-exhibition/>





**Delaplaine Art Center, Frederick**  
**National Juried Exhibition Deadline: Sun Mar 23, 2025**  
 Starts: Sat May 03, 2025  
 Delaplaine Arts Center, Frederick, MD.  
 The Delaplaine Arts Center, 40 South Carroll St, Frederick, Maryland, announces the 2025 National Juried Exhibition.

All media are eligible, including but not limited to painting, printmaking, photography, ceramics, drawing, fiber, installation, and sculpture. There are no size restrictions for this exhibition. This exhibition will be held physically. Deadline: Sunday, March 23, 2025 . <https://delaplaine.org/exhibitions/opportunities/nje/>

# BLACK ROCK

## CENTER FOR THE ARTS

The Germantown Cultural Arts Center, Inc dba BlackRock Center for the Arts is supported in part by funding from the Montgomery County Government and the Arts & Humanities Council of Montgomery County.

301.528.2260 | [info@blackrockcenter.org](mailto:info@blackrockcenter.org)  
 12901 Town Commons Drive, Germantown MD 20874  
 HOURS (MAY VARY- SEE WEBSITE)  
 Mondays: Closed  
 Tuesday - Friday: 12 PM – 6 PM  
 Saturday: 12 PM - 4 PM  
 Sunday: 9 AM - 2 PM

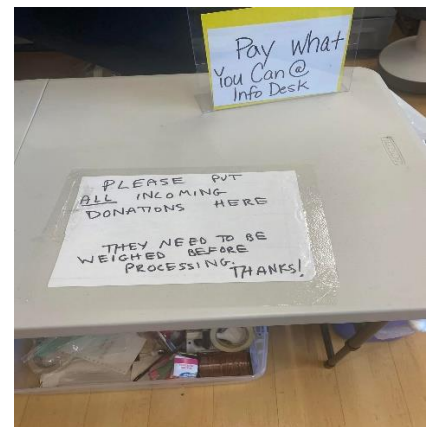
### Current Black Rock Exhibits

Robecca Marimutu  
*Portrait(s), Divine Mother*  
 Kay Gallery, January 18-March 2

Dunnie Onasanya  
*Choose Your Joy*  
 Gallery II, January 14-February 16

### Art Supply Thrift Shop at BlackRock

Looking for odds and ends to start or complete a project? Visit the Art Supply Thrift Shop on the upper level of BlackRock. Open Saturdays 12 to 4. Pay what you can pricing. Donations accepted.



### Links to Local February Art Exhibitions

- <https://www.gaithersburgmd.gov/recreation/visual-art>
- <https://www.thecompassatelier.com/gallery-shows/0225>
- <https://www.waverlystreetgallery.com/>
- <https://delaplaine.org/exhibitions/>
- <https://www.strathmore.org/events-tickets/exhibitions/>

<https://www.glenstone.org/art/current-exhibitions/>

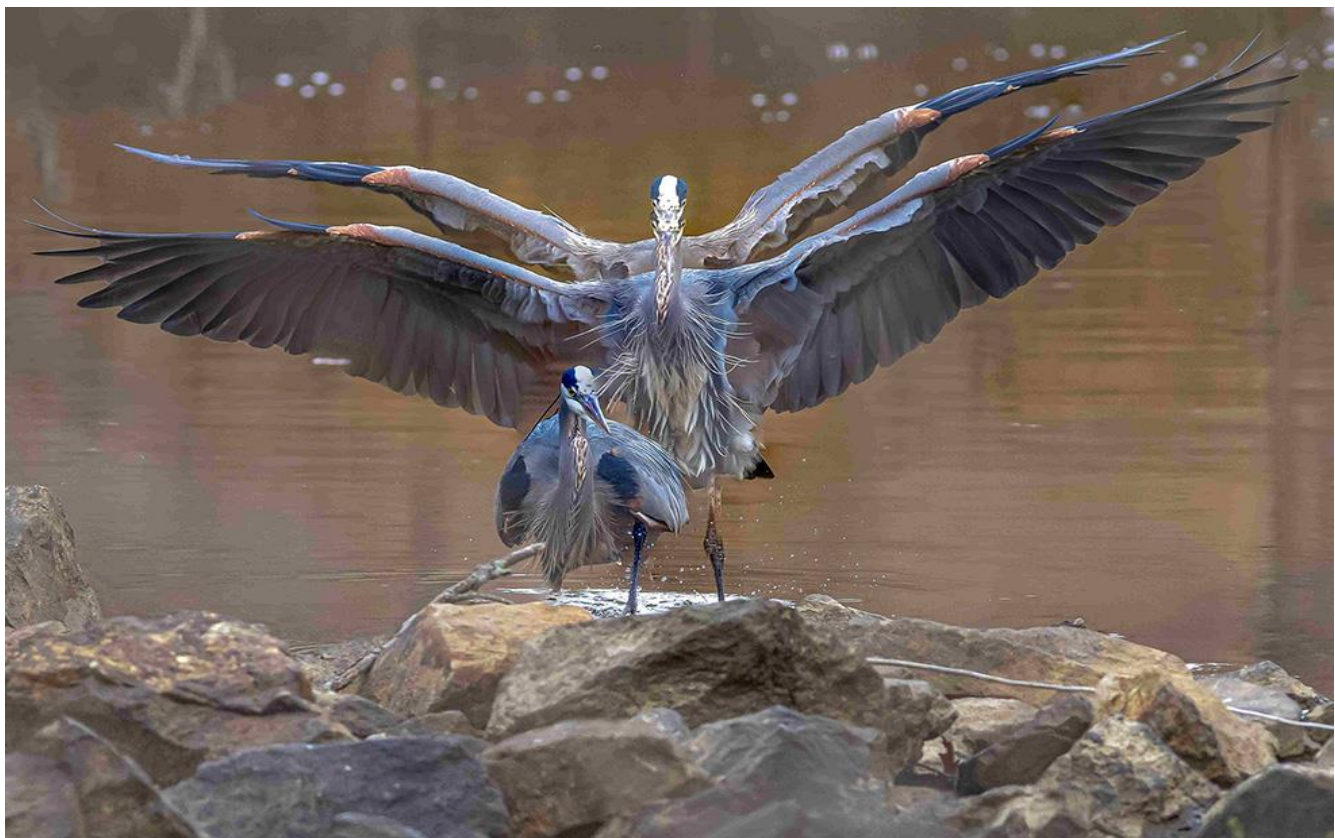
<https://www.sandyspringmuseum.org/a-center-for-cultural-heritage/we-collaborate/exhibitions/explore-our-exhibitions/current-exhibitions>

<https://www.thebeachkraft.com/events-and-classes-calendar>

<https://artistsandmakersstudios.com/news-events-ams-md/>

### *ALOG Monthly Meeting Schedule*

Date and Time	Venue	Event
Wednesday, February 5, 2025 7 to 9 pm	Join Zoom Meeting <a href="https://us06web.zoom.us/j/89748759790?pwd=tAmXrpLhxQZRSMikJmSDMvcWSJt4r8.1">https://us06web.zoom.us/j/89748759790?pwd=tAmXrpLhxQZRSMikJmSDMvcWSJt4r8.1</a> Meeting ID: 897 4875 9790 Passcode: 878874	Beverly Penn Metal Sculpture Installation
Wednesday, March 5, 2025 7 to 9 pm	BlackRock Center for the Arts	Ekaterina Sinchinova Embroidery
Wednesday, April 2, 2025 7 to 9 pm	BlackRock Center for the Arts	Amy Lamb Photographer
Wednesday, May 5, 2025 7 to 9 pm	BlackRock Center for the Arts	ALOG Artists



The Great Blue Heron – Three In One – Derrick Tabor

## ***ALOG MEMBER RESOURCES***

### Important Dates

February 5, 2025 – Zoom Meeting - Beverly Penn, metal sculpture installation (NMWA)

March 5, 2023 – Ekaterina Sinchinova - embroidery (Strathmore)

April 2, 2025 – Amy Lamb - photographer (NMWA)

May 7, 2025 – ALOG artists speaking about their work in the Kay Gallery

### ALOG Board

Kendra Biddick – President

Yelena Skripchenko – Vice President

Rosanne Cuttitta – Secretary

Andrey Skripchenko – Treasurer

Keith Mounts – Website Manager

Lori Myers – Membership Coordinator

Noelie Angevine – Volunteer Coordinator

Thom Germer – Immediate Past President

Marge Wasson – Marketing

Carol Moore – ALOG BlackRock Show Chair/  
BlackRock Liaison

Bill Mapes – Special Exhibitions Chair

Marylou Bono – Newsletter, Social Media

Amy Lance – Social Outreach

Lynne Haussler Oakes – Founder

Website – <http://alog.org>

Google Group – <https://groups.google.com/forum/#!forum/alog-communications-team>

Public Facebook Page – <https://facebook.com/ArtLeagueofGermantown>

Members Only Facebook Page – The Art League of Germantown (ALOG) Members Only Group

<https://www.facebook.com/groups/1182335545111943/>

Instagram – <https://www.instagram.com/gtalog?>

Calendar – Links can be found in the footer of every ALOG email and <http://alog.org>

Newsletter – Published monthly by email and on the website

### Get Involved!

Do you know an ALOG member who is going through a difficult time and needs ALOG's support? Contact Amy Lance

[socialoutreach@alog.org](mailto:socialoutreach@alog.org)

Would you like to make a contribution to the ALOG Newsletter or Image Content Library? Contact Marylou Bono

[newsletter@alog.org](mailto:newsletter@alog.org).

Are you a new ALOG member who would like a mentor to help get you acclimated to the group? Contact Lori Myers

[membership@alog.org](mailto:membership@alog.org)

Are you interested in becoming a Board Member, joining a committee, or just want to learn more? Contact Kendra

Biddick [President@alog.org](mailto:President@alog.org)

Would you like to volunteer at a BlackRock Reception or Show Hanging? Perhaps you would like to volunteer to bring a food item to one of the monthly meetings? Contact Noelie Angevine [volunteer@alog.org](mailto:volunteer@alog.org)

If you would like to send images of your artwork to the ALOG image bank that is used to promote our shows please contact [publicity@alog.org](mailto:publicity@alog.org)

### **ALOG GOALS**

- Provide members with the stimulation to thrive in their personal art goals, and to foster creativity.
- Encourage enthusiastic support and appreciation for art and for other artists' work.
- Contribute to the surrounding community in furthering art awareness and education.

### **ALOG MONTHLY MEETINGS**

Our meetings are generally held on the first Wednesday of each month, September through May (January and February are typically held via Zoom), at 7:15 p.m. at BlackRock Center for the Arts, 12901 Town Center Drive, Germantown, MD, in the Germantown Town Center on the corner of Rt. 118 and Middlebrook Road (across from the Safeway).

### **IDENTITY STATEMENT**

ALOG is a group of professional and amateur visual artists, fine crafters and art appreciators organized to further the careers of its members and to bring an appreciation of fine art and crafts to the community. ALOG draws members from throughout Montgomery County. Learn more at [www.alog.org](http://www.alog.org)